

zortrax inventure



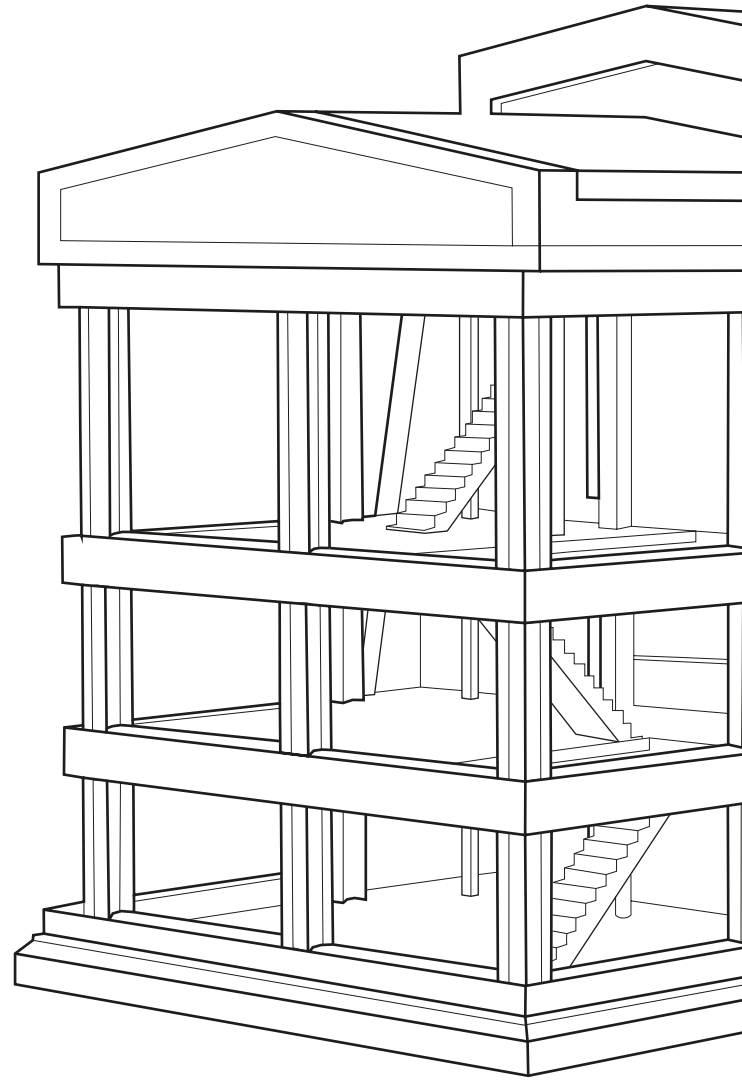
smart

professional.

zortrax inventure

the **SMART** **ONE.**

Meet Zortrax Inventure, the must-have 3D printer for professionals who're looking for the top quality printer and do not accept any excuses. The device introduces you to a number of features that will make your work extremely easy and satisfying, like Dissolvable Support System, closed heated chamber or dedicated software. The notification system and cartridges that register the material consumption can give you control over the printing, while the HEPA filter will assure you about the safety of the whole process. Now even the most complex objects can be brought to life. Print with incredible dimensional accuracy and consistent repeatability – smartly and professionally.



DISSOLVE

what's
redundant

Together with Zortrax Inventure comes DSS, the Dissolvable Support System.

Starting now, you can print complex parts or entire moving mechanisms in one print. DSS is a unique solution that lets you save even more time.

Just put the printed object into the water and watch the support disappear, leaving the model free from residue.



Model with Z-SUPPORT material

inventure

Back
Model
Support

Z-PETG
Color: Black
Remaining: 315g / 350g



all-in **CONTROL.**

What is the smartest thing about our 3D printer? Its ability to communicate and interact with the user. Zortrax Inventure has a built-in notification system that prevents errors and gives you full control over the printing process.



plug-**IN.**

Having 3D printing materials in a cartridge makes the replacement easier and faster. You can have better control of material consumption level. Each cartridge has a special chip which sends information such as material type, color, and consumption level to the 3D printer.



control **THE HEAT.**

It's the right time to forget about warping and deformations. Zortrax Inventure closed heated chamber provides the constant temperature for your models during the printing process. Leave the external factors behind and enjoy flawless printing.



A functional model of a gear mechanism.

The dissolvable support material allows you to print a moving mechanism in one print.

the factory **PROPERTIES.**

Users of Zortrax Inventure can choose from a range of professional grade materials that meet various testing purposes, each of them available in a form of easy to use cartridge.

Enjoy the ability to create detailed models and complex shapes. Print end-use parts, functional prototypes or other objects that require high precision and durability or use it for accurate pre-production testing.



Model with dissolved support, printed in one part on Zortrax Inventure.



A conceptual model of a heart.
Z-PLA material makes possible creating a precise and detailed model of a body organ.



be a **COMPETITOR.**

Zortrax 3D printing solutions will give your company competitive edge on the market. Stop hesitating and get:

- accelerated and facilitated product development
- significantly lower prototyping costs
- increased production flexibility
- easy product customization

Discover the Zortrax Inventure at www.zortrax.com

Printing

Technology	LPD Plus – advanced technology with DSS system
Build volume	135 x 135 x 130 mm 5.5 x 5.5 x 5.3 in
Resolution	90-200 microns
Material container	Cartridge
Wall thickness	Minimal: 400 microns Optimal: 800 microns
Resolution of single printable point	in XY axis: 400 microns, in Z axis: 90-200 microns
Material diameter	1.75 mm (0.069 in)
Nozzle diameter	0.4 mm (0.015 in)

Temperature

Extruder maximum temperature	380°C (716°F)
Heated chamber	Yes
Chamber maximum temperature	90°C (194°F)
Ambient operation temperature	15°-35°C (60°-95°F)
Storage temperature	0°-35°C (32°-95°F)

3D Printer

Support	Dissolvable – printed from a different material than the model
HEPA filter	Yes
Material consumption sensor	Yes
Chip with information about material (type, color, consumption)	Yes
Extruder	printing with the main and the support material
Connectivity	SD Card (included)

Electrical

AC input	110/240V ~ 2 A 50/60 Hz
Power requirements	24 V DC @ 7 A
Power consumption	160 W

Software

Software bundle	Z-SUITE
File types	.stl, .obj, .dxf, .3mf
Supports	Mac OS X / Windows 7 and newer versions

Physical Dimensions

350 x 350 x 400 mm 13.7 x 13.7 x 15.7 in



zortrax

office:

office@zortrax.com

sales department:

sales@zortrax.com

technical support:

support@zortrax.com

find a local Reseller: zortrax.com/resellers

more info at: zortrax.com

©2017 Zortrax S.A. All rights reserved.

'Zortrax', 'Zortrax M200', 'Zortrax M300', 'Zortrax Inventure', 'Z-ESD', 'Z-PLA Pro', 'Z-ASA Pro', 'Z-ULTRAT', 'Z-HIPS', 'Z-GLASS', 'Z-PETG', 'Z-PCABS', 'Z-ABS', 'Z-PLA', 'Z-SUPPORT', 'Z-SUITE' are registered trademarks of Zortrax S.A.



Z-PETG

strength **ENCAPSULATED.**

With Z-PETG you can create robust and rigid prototypes that will exhibit high functionality even when exposed to chemicals and oily substances. Achieve industrial-grade prototypes from using multi resistant material enclosed in a form of easily inserted cartridge.

applications:

- models that need to be resistant to salts, acids, and alkalis
- automotive parts
- housing prototypes
- parts resistant to oils and greases
- mechanical elements
- parts exposed to UV light

available for:



zortrax
inventure

colors:



grey



black



Z-PLA

get it all **SIMPLE & SAFE.**

Experience smooth 3D printing using a smart cartridge with Z-PLA. Thanks to this, you can print models with intricate shapes, rich details and biodegradable properties. The hassle-free 3D printing allows you to create top quality models and recycle them easily.

applications:

- detailed conceptual models
- various consumer goods
- models requiring biodegradability
- housing prototypes

available for:



zortrax
inventure

colors:



blue



yellow



green



grey



white



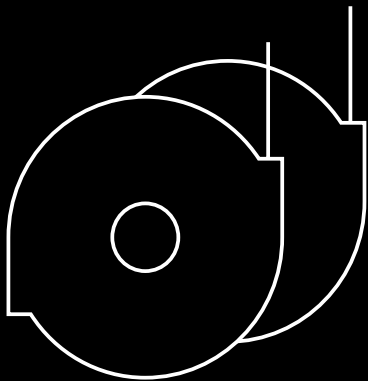
black

Z-SUPPORT and DSS[®]



DSS REMOVAL turned smart.

We pushed the advancement forward when it comes to the solutions for Zortrax Inventure. The DSS (Dissolvable Support System) allows you to skip manual support removal, and use the DSS station where you can put the model and see all the residue disappear within hours.



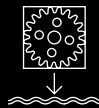
SUPPORT gone for good.

Implementation of the DSS solution and Z-SUPPORT in fact reduces the users effort to the very minimum, so now you can focus even more on your designs and don't bother about the manual work. All your activities boil down to putting the model into the DSS Station and taking out the finished object after a few hours.

available for:



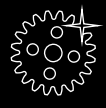
how it works:



put the model into the water in DSS station



wait until the support disappears completely



have your model cleared, with a flawless surface

zortrax